

Mellolee Childrens Foundation



2024/2025

Mellolee Children Fund aims to provide access to high quality education and other related basic needs in order to empower underprivileged children from the rural areas of South Africa. This initiative is inspired by a shared belief of youth empowerment through giving back.

Content

MELLOLEE	01
INDEX	02
WELCOME ADDRESS	03
ABOUT MELLOLEE	04
FOUNDERS BACKGROUND	05
FOUNDATION BACKGROUND	06
MISSION STATEMENT	07
VISION STATEMENT	08
VALUES	09
OBJECTIVES	10
GOALS	11
KEY FOCUS	12
EMPOWERMENT	13
KEY BENEFITS	14
TARGET POPULATION	15
PROGRAMS	16
ABANTU BABANTU FEEDING SCHEME	17
STATISTICS & TESTIMONIALS	18
MEET THE TEAM	19
FUNDING	20
DONATIONS	21
CONTACT INFORMATION	22

Welcome

It is with great pleasure and delight that we welcome you to the Mellolee Children's Fund, an initiative on a mission to provide quality education, basic needs and to empower underprivileged children from rural and farm area's through relevant education, skills development and programs aimed at creating sustainable changes in their respective communities.

This we have done over the past year and, together with the educators, have noted the significant impact of this initiative through various activities that have been beneficial to nearly 1, 137 children; this just being the beginning of an initiative we one day hope to spread across South Africa.

As the founder and visionary of this initiative, despite the many challenges we've faced as a not-for-profit organisation, our vision remains strong and our mission crystal clear as we continuously do our best to shed light, educate and invest in the leaders of tomorrow using our own resources, social media platforms and various donations from individuals, businesses and brands. We welcome you on this journey and look forward to your support and contribution to this noble cause.

Beulah Mamello Baduza
Founder, Mellolee Children's Fund



About Our Foundation

Mellolee Children's Fund is a non-profit organisation that was born on the 4th of April 2023 and started as a winter school uniform drive amongst young people on social media, aiming to leverage their individual platforms for good. It has since evolved into a comprehensive initiative that provides clothing, educational supplies, weekly meals amongst other resources for all the children in attendance at said rural schools.

Fuelled by creativity, ambition and a youthful desire to mobilise fellow peers into giving back, the founder launched an initiative designed to make philanthropy appealing again and more importantly, accessible to all by leveraging visual aids and interactive digital content that speaks to the work being done by the organisation. Mellolee Children's Fund would set out to inspire a generation of young people to show up for themselves and others in need as this was the legacy left by many South African heroes before them.

The founder expanded her efforts by zeroing in on schools located in underserved areas that are often overlooked by many. The intuition to focus on children in rural schools proved correct; the demand for support in these communities was significant, with improved education emerging as a critical means of assistance for the children and the community at large.

A photograph of four women in a kitchen setting, all wearing bright yellow aprons over their clothing. They are smiling and looking towards the camera. The background shows a window with a grid pattern and a brick wall. The text 'Creator(s) Background' is overlaid in large, bold, black letters on a semi-transparent white background.

Creator(s) Background

Being a BA and Bachelor of Laws graduate from the University of Pretoria, the founder's journey towards becoming an all-rounded professional and a future change-maker was driven by the profound desire to make a meaningful impact in both the South African legal system and its socio-political landscape.

While continuing her studies and leveraging her personal skills and privileges, the founder also pursued a creative path, later achieving much success in modelling and entrepreneurship. Her accomplishments include being a Miss South Africa finalist, being a Golden Key Society member, and establishing creative ventures that opened further opportunities for young women like herself. During this period, the founder recognised the need to bridge the gap between social issues, the rising use of social media and a disengaged youth who were often unsure on how to contribute to their communities.

In alignment with the founder's core values, MCF is deeply rooted in being passionate about education and is committed to giving back to underserved communities, recognizing the transformative power that holds in breaking negative cycles. By merging legal principles and creative expertise, Beulah Mamello Baduza strives to advocate for holistic justice, change and to empower children through accessibility and innovative solutions.

Foundation Background

In the immortal words of Malcolm X, “education is the passport to the future, for tomorrow belongs to those who prepare for it today.”

From the inception of the very first initiative, the Mellolee team has witnessed displays of untapped intellect and talent from the school children they have had the privilege to serve. We are happy to report that what started as a small social media initiative, has now impacted over 1000 children and continues to grow on a monthly basis.

This success has only increased determination to do even more for all children in rural areas across the country.



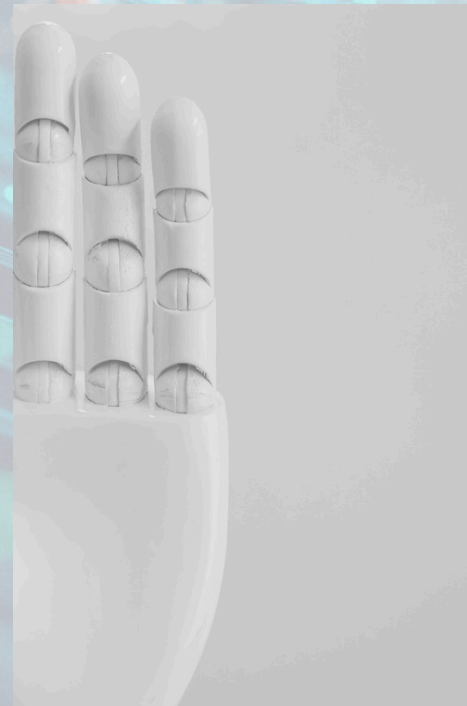
Mission Statement



To empower the future of tomorrow by igniting a collaborative force of young people, businesses and brands who aim to bridge social gaps and contribute to quality education and basic needs for the hidden gems of our rustic regions.

Vision Statement

Ensuring equitable access to education and basic needs, regardless of background or circumstance. This is UBUNTU.



Core Values

We encourage and enforce our four organisational values namely: inclusivity, responsibility, possibility and growth



01 INCLUSIVITY

Fundamental Constitutional law of South Africa ensures that every child is entitled to receive basic needs and has the right to a quality education. We advocate for this right to be extended to all children, regardless of their location, including those outside metropolitan areas.

02 RESPONSIBILITY

Aligned with the core essence of Ubuntu, we urge the youth to actively contribute to marginalised communities, recognising that the future and prosperity of our nation depends on those who willingly share knowledge and empower the next generation.

03 HOPE

Hope is a beacon of light for children in impoverished areas, offering them the promise of a better tomorrow despite their current circumstances. It instils resilience, motivating them to persevere through challenges and strive for a brighter future. With hope, children can envision possibilities beyond their present realities, fostering a sense of agency and empowerment.

04 GROWTH

Investing in children's growth and education not only benefits them individually but also enriches their communities by cultivating a future generation of industrious individuals, visionary leaders, and impactful change-makers.

Objectives and Goals

- Engage as many young adults as possible from diverse professions and backgrounds to interact with school children, fostering a mentorship network lasting over years.
- Create an immersive and interactive experience for the children, brands and donors on the days where physical visits are planned; an experience where all involved parties are advantaged.
- Allowing the children to assist in initiatives in smaller to medium ways as to make them feel involved in the changing of their own futures.

Long term Goals

- Expand our reach to more rural/farm schools each year and establish long-term programs that enable successful graduates that eventually give back into their communities.

Short term Goals

- Obtain sufficient funding to address the specific needs of each rural school based on the research conducted for that school.
- Meet the immediate needs of the school children; needs that will assist in bettering the learning environment for said children
- Leverage all available tools, especially social media, to raise awareness of our initiative and garner broader support.
- Inform marginalised children about potential career paths and opportunities and support them in achieving their goals.



Key Areas of Focus

EDUCATION

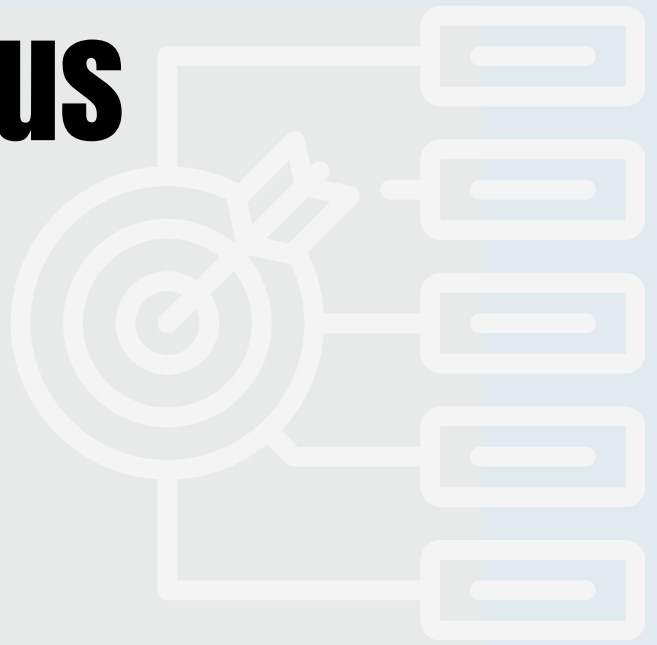
As stipulated by the South African Schools Act, school children are mandated to participate in a prescribed minimum number of hours of educational activity annually. However, the challenge of meeting this requirement becomes evident when a school lacks the essential facilities for students to engage in mental and physical activities. An example of this is how at present, with only nine teachers at Maheelo Primary School, the responsibility for fulfilling recreational or sport requirements for the entire school falls upon the Life Orientation teacher solely, despite the complete absence of sports facilities.

On an institutional scale, the provision of resources and facilities for children attending rural schools would not only ease the burden on teachers but also enable them to meet this mandate effectively. Additionally, this initiative holds significance at the governmental level, as resources allocated to schools like Maheelo are already extremely strained. The presence of facilities would contribute to the efficient utilization of available resources and enhance the overall educational experience for both students and educators.

HEALTH

Focusing on the health of children studying in rural schools and living in poor communities brings numerous benefits that extend beyond individual well-being. Healthy children are more likely to attend school regularly and perform better academically, which increases their chances of breaking the cycle of poverty. To quote Nelson Mandela: “Overcoming poverty is not a gesture of charity. It is an act of justice. It is the protection of a fundamental human right, the right to dignity and a decent life. While poverty persists, there is no true freedom”.

Improved health enhances the children’s ability to concentrate, participate actively in class, and engage in physical activities, contributing to their overall development. Furthermore, addressing health issues early reduces the long-term healthcare costs for families and communities, easing the financial burden on already struggling households. Investing in the health of these children fosters a more equitable society, as it ensures that all children, regardless of their socio-economic background, have the opportunity to reach their full potential and contribute positively to their communities in the future.



To quote Nelson Mandela: “Overcoming poverty is not a gesture of charity. It is an act of justice. It is the protection of a fundamental human right, the right to dignity and a decent life. While poverty persists, there is no true freedom”.



EMPOWERMENT

Children from underprivileged backgrounds can experience a wide range of social benefits that contribute to their personal development and well-being when given adequate support. These benefits extend far beyond the classroom and have a lasting impact on their lives that later empower them.



key benefits:

Teamwork: Access to activities such as sports can teach children how to collaborate, work together, and rely on one another to achieve common goals. These skills are transferable to various aspects of life and are particularly valuable for those facing challenging circumstances.

Leadership Skills: Participation in educational activities can nurture leadership qualities, as children learn to take initiative, make decisions, and guide themselves and fellow students. This empowers them to become more confident and assertive individuals.

Confidence Boost: Success and improvement at school can contribute to higher self-esteem and self-confidence. These positive self-perceptions can have a profound impact on a child's overall well-being.

Target Population

With a lifelong commitment to giving back instilled in the foundation and heart of Mellolee, we became increasingly aware of a gap in initiatives aimed at marginalised communities, particularly those in remote or 'inaccessible' areas.

Recognising this disparity, our team embarked on thorough research, focusing on schools and communities on the outskirts of South Africa. What we uncovered was alarming – learners in these areas were facing dire conditions that profoundly impacted their educational journey.

Witnessing the inadequate support provided to these schools first-hand, despite their role in providing a safe environment for children to learn and thrive, fuelled our determination to make a difference where talented and deserving children go unseen and are often forgotten.

01 Age Range of Children

The children we proudly serve range from ages 6 to 16 years old. This covers all children learning at a foundation and primary phase level.

02 Geographical Focus

The rural areas we've reached so far are Tigane based in North West and Port St. John's based in Mthatha Eastern Cape.

Our aspiration is to annually select a rural school from each province, establishing a network of educational institutions that we will nurture alongside young volunteers and donors. This collaborative effort aims to foster sustainability within these schools, empowering them to shape the bright minds of their communities for generations to come.

Main Programs

1. Winter Uniform Drive
2. Recreational Abundance school Drive Maheelo
3. Rise Mthatha Drive

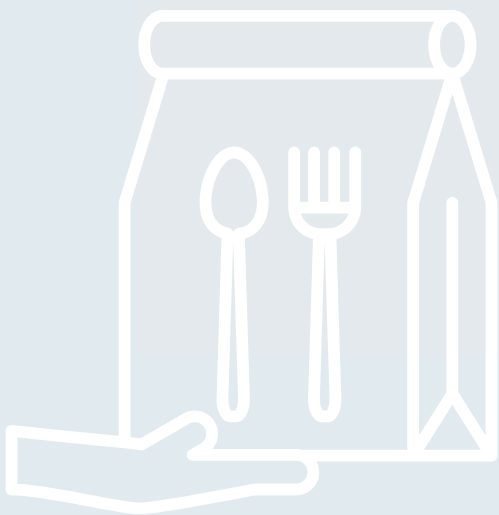
Contact us directly on hello.mellolee@gmail.com for detailed breakdowns of above programs and budget related queries.

After-School Support Programs

The Abantu Babantu Feeding Scheme

At Mellolee, while our primary commitment lies in ensuring access to quality education, we recognize the profound influence of the communities our students hail from in their holistic development and success.

Our dedication extends beyond the classroom, acknowledging that social backgrounds significantly shape learning outcomes. Operating in rural and farm areas, we have witnessed first-hand the intricate link between learning ability, available resources, and socioeconomic challenges such as: poverty, hunger, crime, gender-based violence, and parental absence. Due to these circumstance, we launched the Abantu Babantu feeding scheme in September 2023.



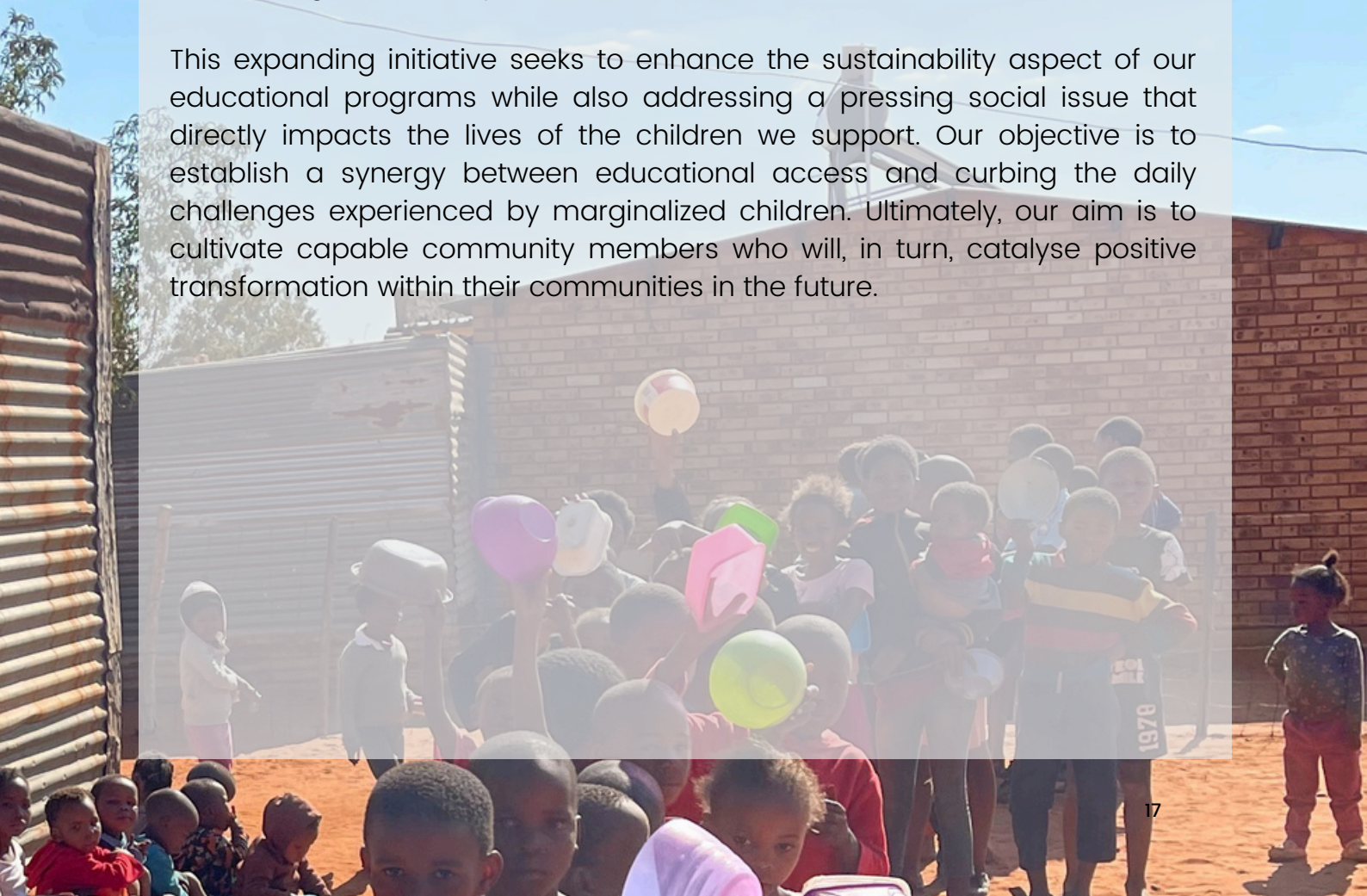
Abantu Babantu Feeding Scheme



In an attempt to address the broader contextual factors affecting the children we serve, Mellolee strives to create an environment where every child can thrive academically and personally. This resulted in the birth of the Abantu Babantu feeding scheme.

This vital initiative provides meals for 400 children twice a week. We've engaged 5 local community members to oversee the cooking and distribution of food across 5 different locations. Additionally, they assist us in maintaining records, which in turn guide further research to sustainably tackle hunger effectively now and in the future.

This expanding initiative seeks to enhance the sustainability aspect of our educational programs while also addressing a pressing social issue that directly impacts the lives of the children we support. Our objective is to establish a synergy between educational access and curbing the daily challenges experienced by marginalized children. Ultimately, our aim is to cultivate capable community members who will, in turn, catalyse positive transformation within their communities in the future.



Key Statistics & Testimonials

The number of children served by Mellolee Children's Fund and its team is 1,137.



TESTIMONIALS

"I grew up in a village in Venda where it was rare for people to dedicate time to visit and engage with students at school. I didn't realize the impact it could have until I had the opportunity to travel with Mellolee and revisit my own school days. Witnessing the sheer joy and excitement among the children as they received gifts, participated in motivational activities, and engaged with the Mellolee team was truly heartwarming".

— Adv Mutavhatsindi Fulufhelo, Volunteer

"I'm really humbled. My hope is that God grants you strength, allowing your influence to extend beyond our school, reaching and uplifting many other educational communities as well. You are now a family to us at Maheelo and your team of young professionals inspires my children to take learning seriously."

— Meggie N Ntsonda, Principal

MEET THE TEAM/ORGANISATIONAL STRUCTURE

Directors

01

Founder and visionary of the organisation.

Beulah Mamello Baduza

02

Administrative hand of the organisation.

Nompumelelo Mdakane

03

Director.

Loren Leigh Jenneker

Executive Team

04

Social Media manager of the organisation.

Modibe Maponya

05

Project manager and activity planner of the organisation.

Loyiso Khoali

Advisory Board

06

Founder of Envirocentral; they provide expert guidance to Mellolee on technology & sustainability, driving innovative practices for a greener future.

Tshepo Nkopane

07

Current senior educator, advisor and communications channel between the organisation and various schools.

Thobeka Nong

Key Volunteers

08

Videographer of all Mellolee related content.

Somandla Dube

09

Photographer of all Mellolee related content.

Micheal Mogashoa

10

Editor of all content shot by the Mellolee team.

Oswaldo Vilanculo

Funding and Financials

Financials (transparency and accountability practices)

In the spirit of transparency and fostering trust among stakeholders, Mellolee is committed to disclosing all transactions related to donations or memberships from the NGO accounts upon request. This practice ensures accountability and safeguards the interests of our beneficiaries.

Major Donors and Sponsors

At Mellolee, we recognise that effecting meaningful change requires collaboration and collective effort. That's why we've forged partnerships with like-minded brands eager to join us in our mission. Together, as young change makers, we're committed to making a positive impact in rural schools and beyond.

Kiafrika plays a vital role in our educational initiatives, providing invaluable guidance to learners in media, photography, and videography. Their expertise not only enriches our educational programs but also enables us to document our journeys effectively. This documentation serves a dual purpose: it captures our experiences and achievements while also serving as compelling visual aids for recruiting young individuals who are passionate about giving back.

Medal Paints generously supplies us with the necessary resources to undertake the vital task of painting dilapidated schools, revitalising their environments and uplifting their spirits for the purposes of learning. Additionally, they support learners with a passion for art by providing them with essential utensils, fostering their creativity and allowing them to hone their skills.

We eagerly anticipate building connections with additional brands that share our unwavering drive for positive change.



How to Get Involved

When we all work together to break down barriers for underprivileged children and communities, great changes are possible. This segment constitutes the cornerstone of society, wielding transformative power at grassroots levels.

There are numerous avenues at which you can support us – donating, fundraising, volunteering or working directly with us. You can also help us by talking about and sharing our work on social media platforms. Additionally, spreading awareness of our mission is invaluable. To engage with us, please reach out via the provided contact information or hello.mellolee@gmail.com

Donations

Official account number of the foundation:
Mellolee Children's Fund
63101888478
FNB II 253 305

For non-monetary donations contact the organisation on any of the above given contact details or through our social media platforms.

Contact Information

Website:

www.mellolee.org.za

Physical and Mailing Address:

21 3rd street, Killarney 2193

Email Addresses:

beulah.baduza@gmail.com

hello.mellolee@gmail.com

Phone Number:

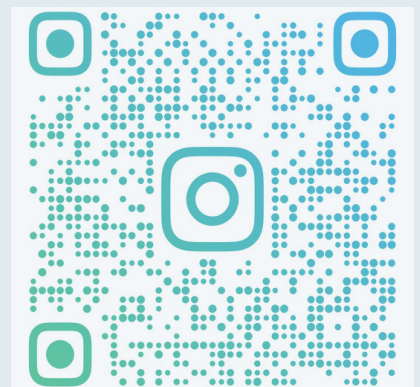
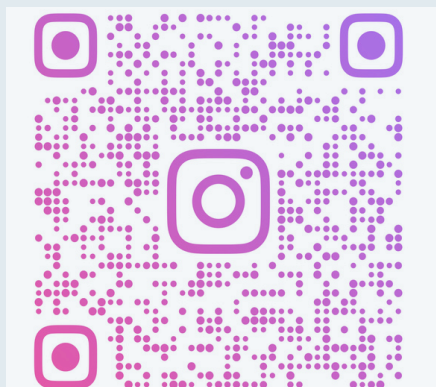
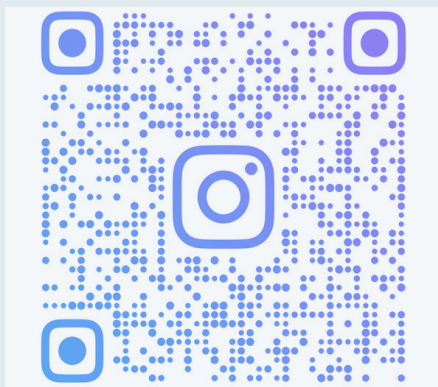
079 417 4889

Social Media:

INSTAGRAM: [mellolee_cf](#)

TIK TOK: [mellolee_children](#)

For more background infoelation on Mellolee Children’s Foundation please scan and watch:



For registration or tax certificate/documentation contact us on any of the above provided platforms.

